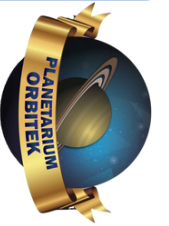




MORSKA MATEMATYKA PANI OŚMIORNICY

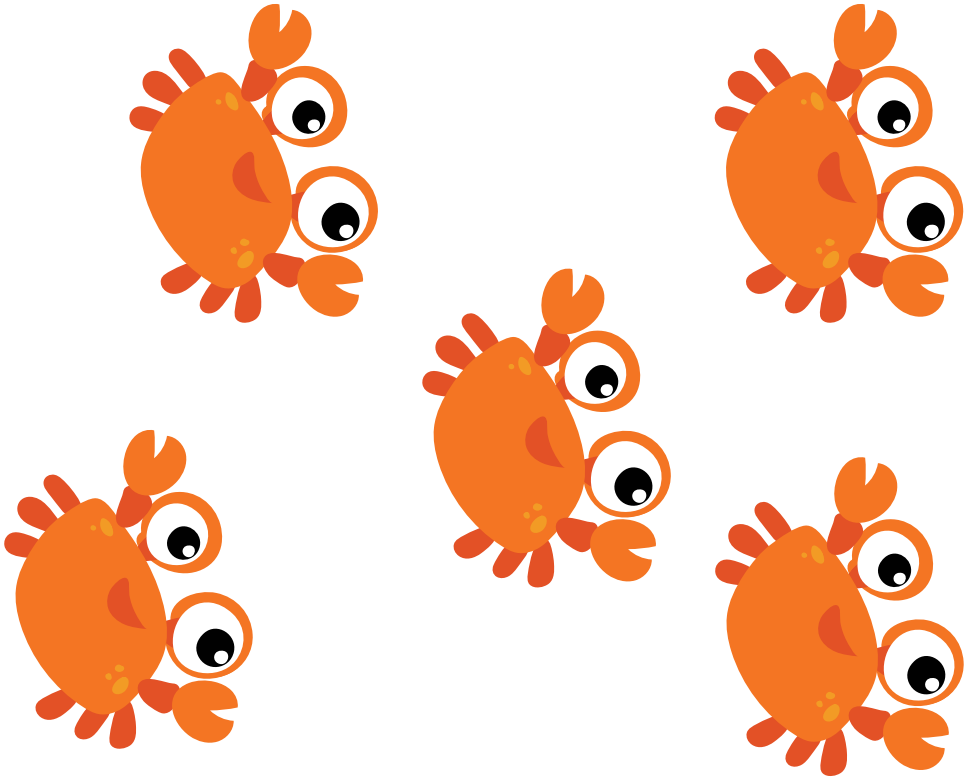




3

5

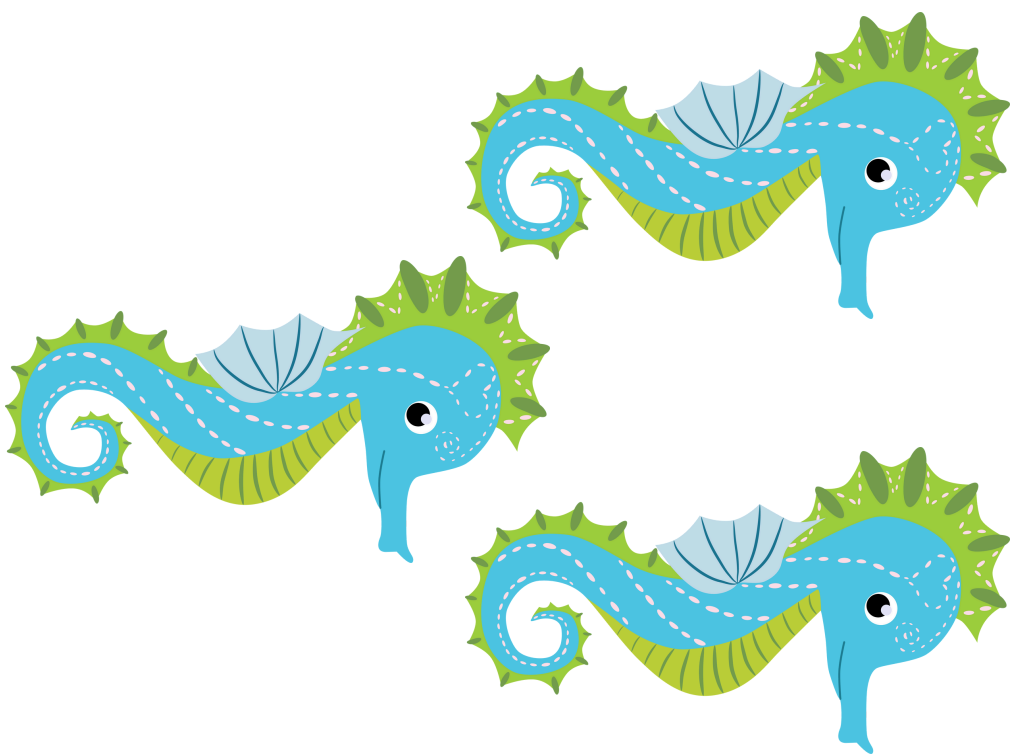
4

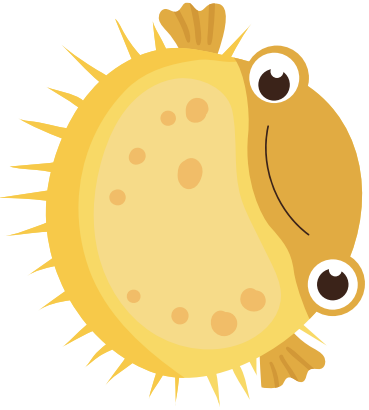
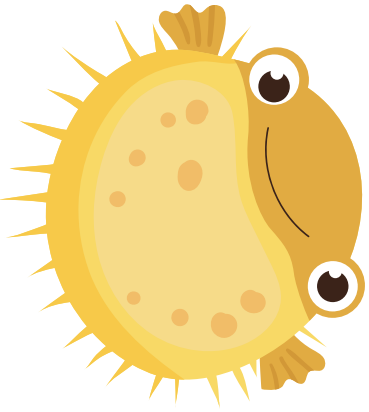
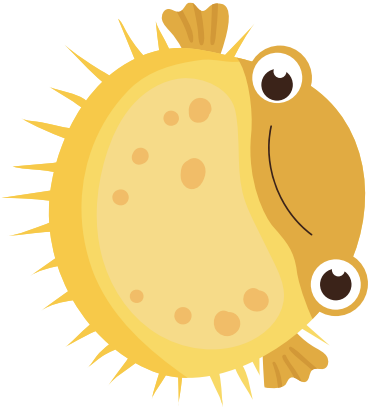
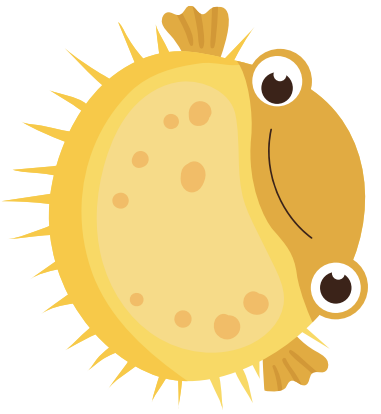


2

3

4

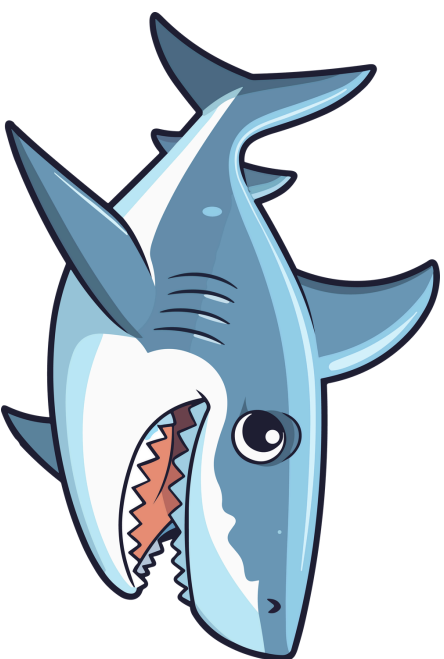
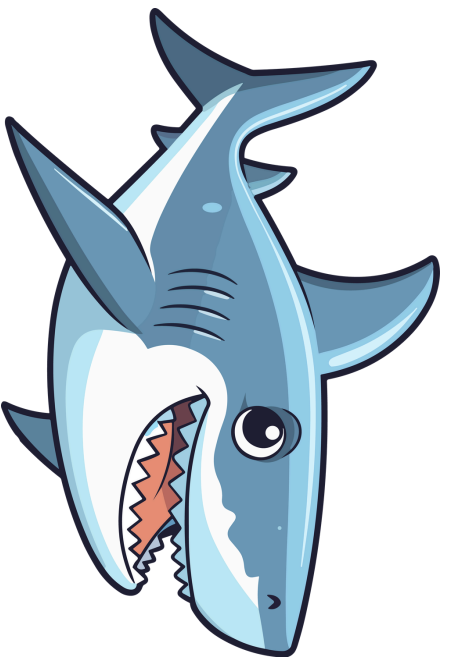




3

5

4



2

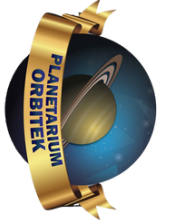
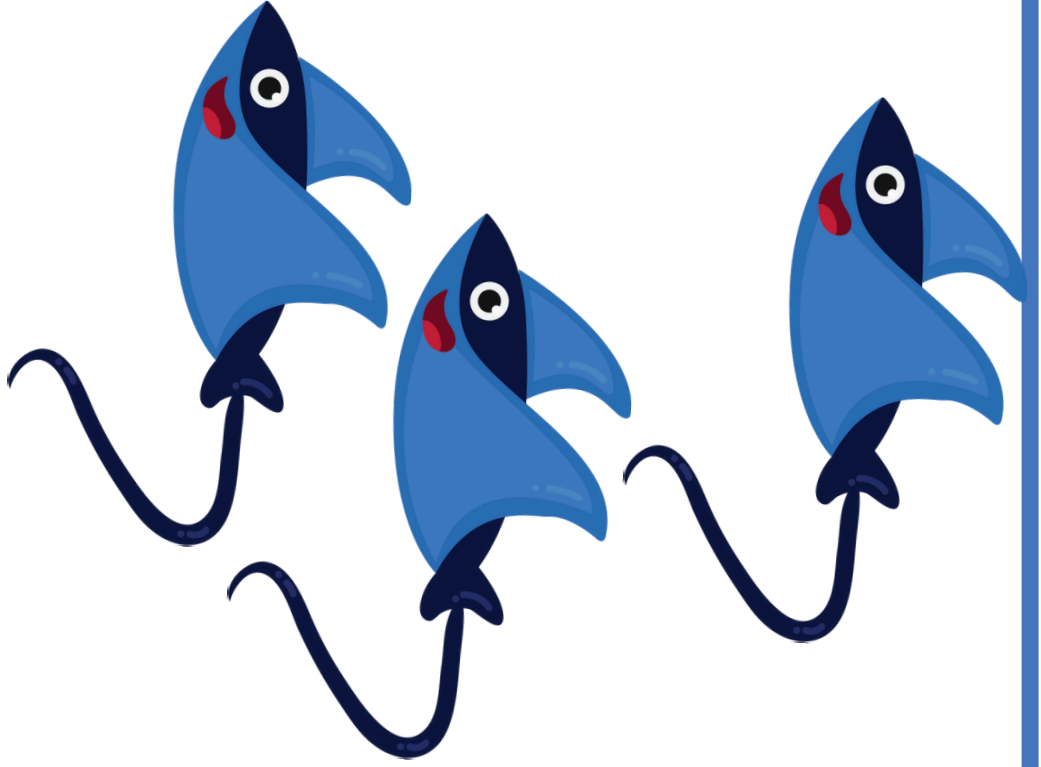
6

1

3

2

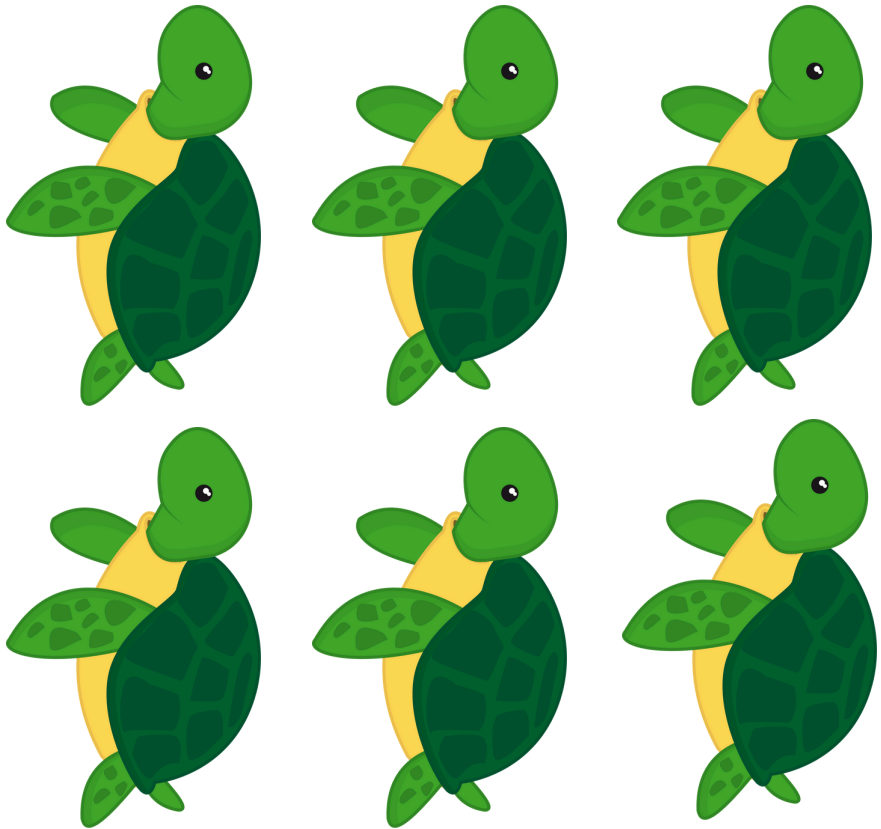
4

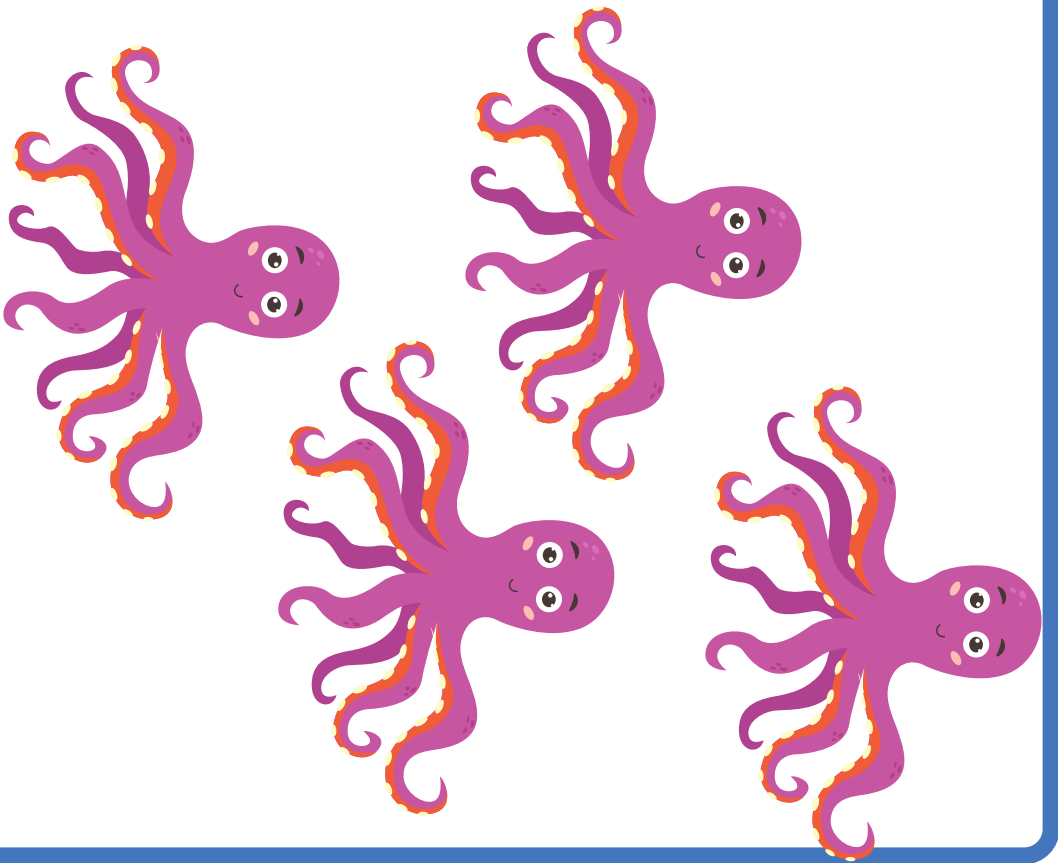
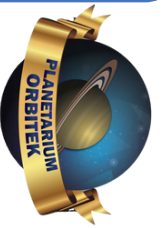


2

6

7

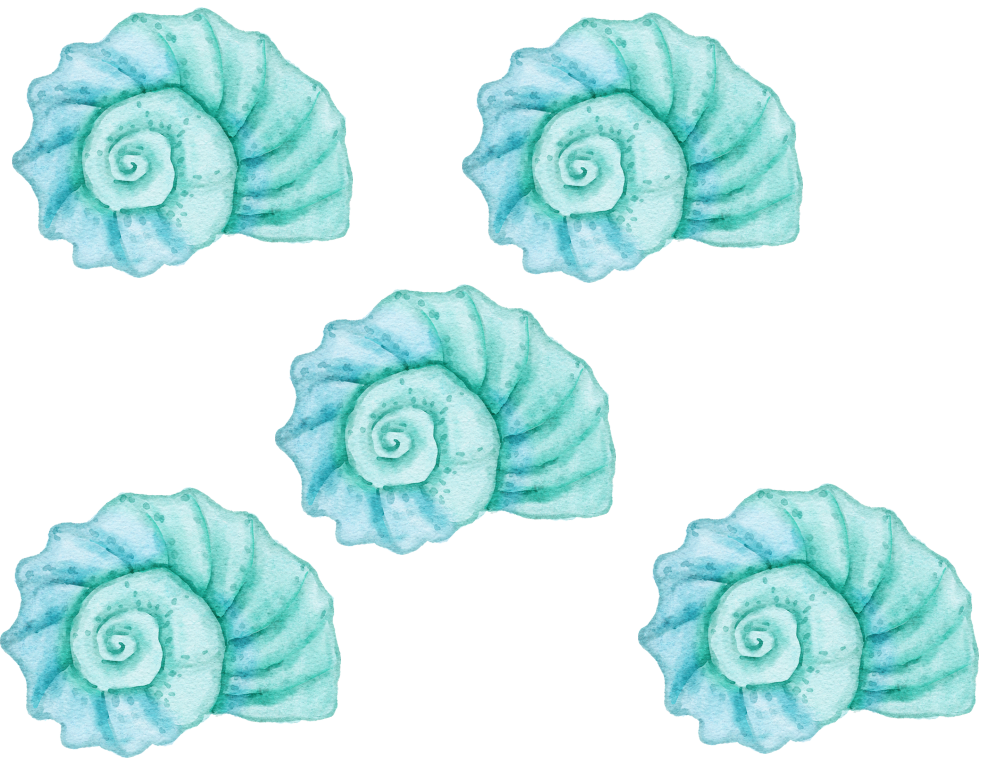




3

2

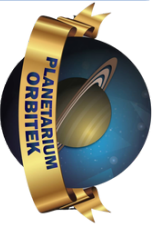
4



2

6

5



8

7

9



2

4

1





3 2 4

This panel contains three boxes with numbers: a green '3', a yellow '2', and a blue '4'. To the right are three illustrations: a blue scallop shell with vertical ridges, a red starfish with small dark spots, and a stack of four orange, spiral shells.

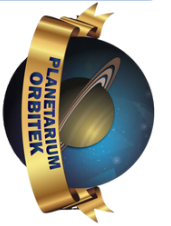
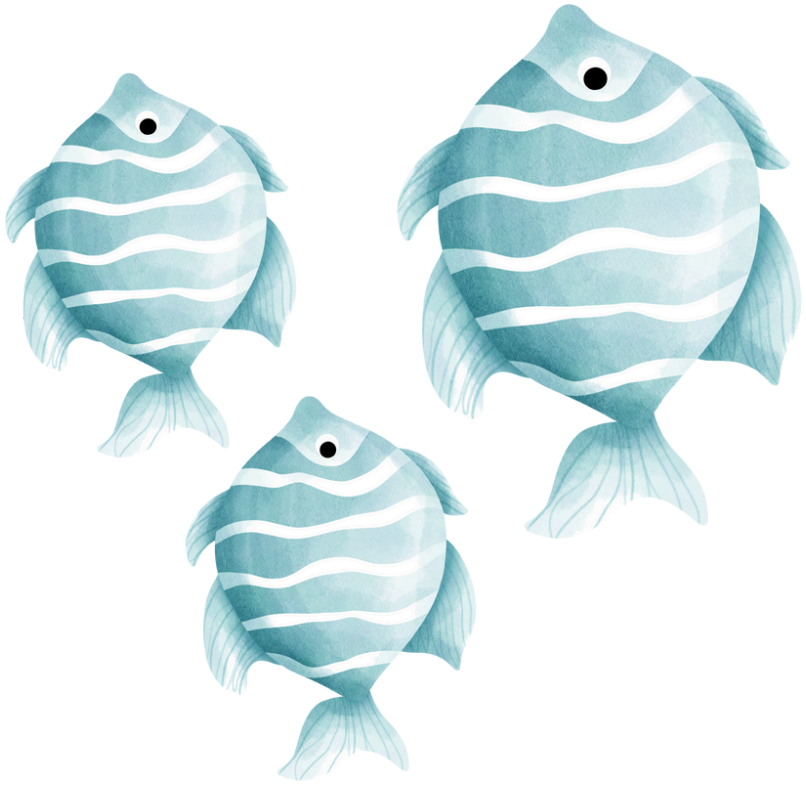
2 1 3

This panel contains three boxes with numbers: a yellow '2', a green '1', and a green '3'. To the right are three illustrations: a pink scallop shell with radial ridges, a blue nautilus shell with a spiral pattern, and an orange starfish with white spots.

3

2

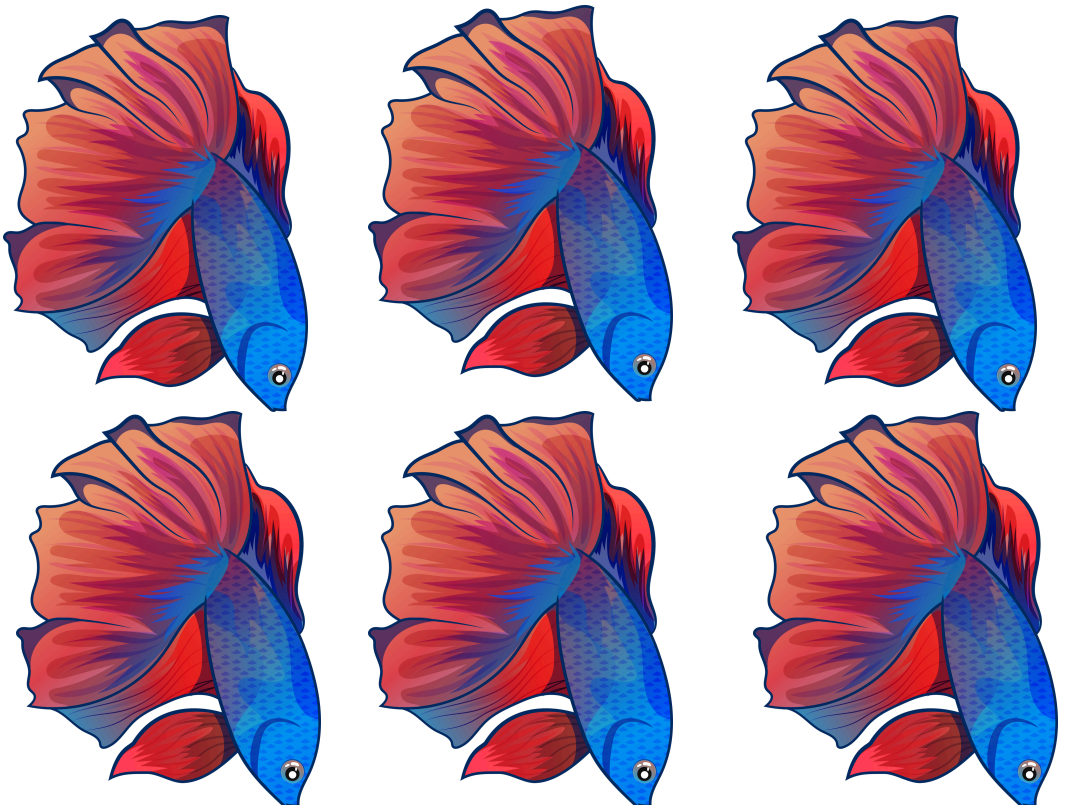
4

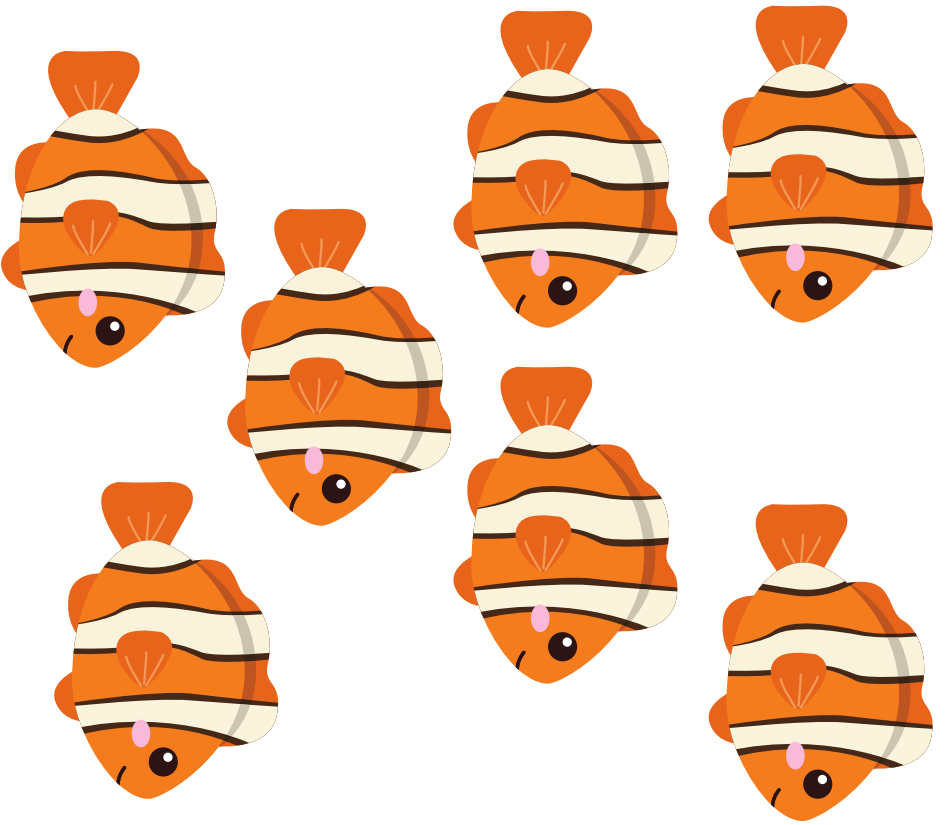
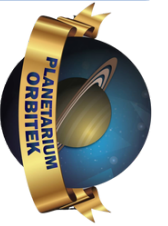


6

5

7





5

7

8



4

7

3